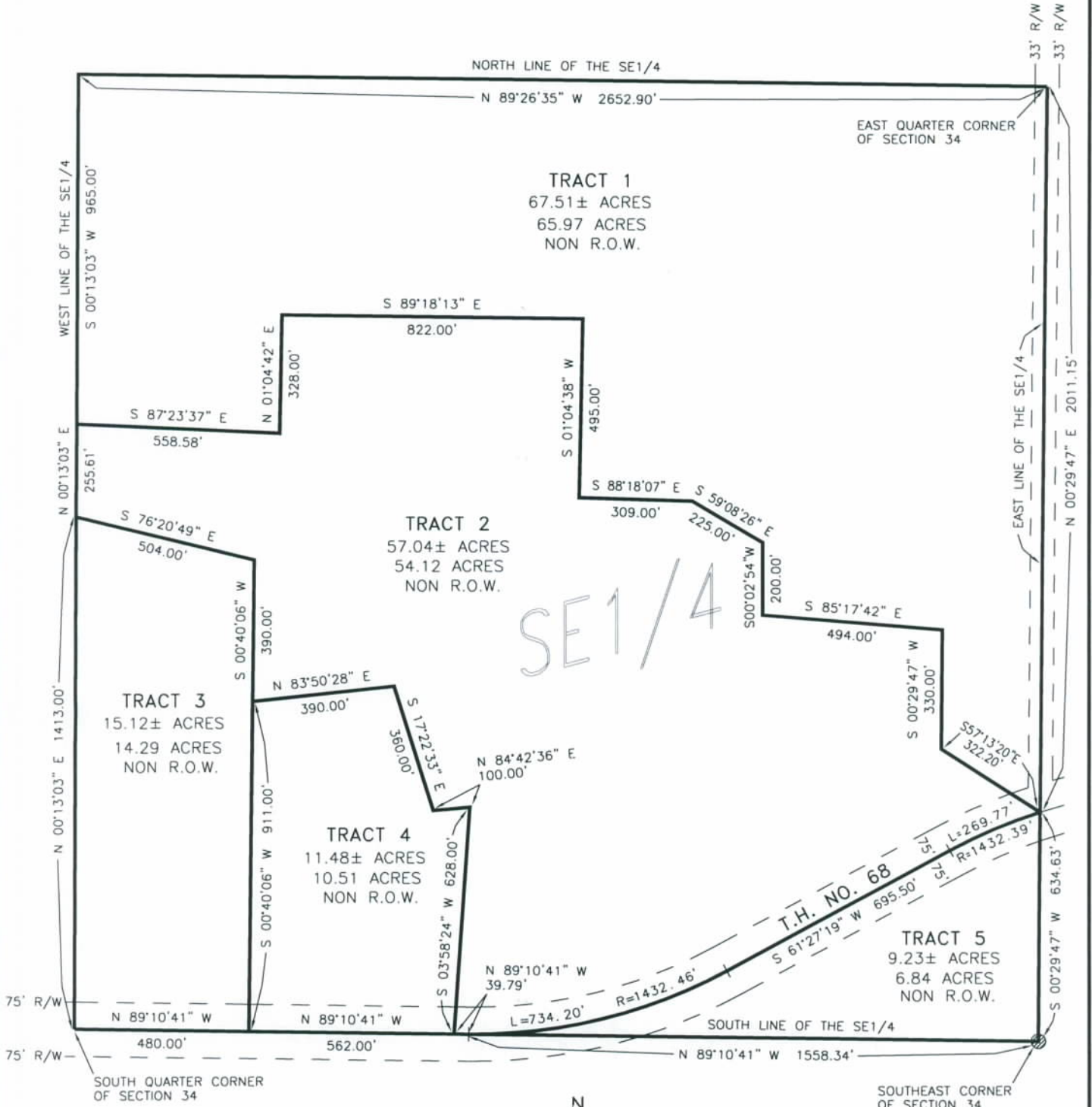


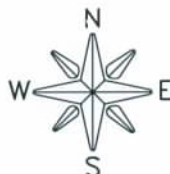
# CERTIFICATE OF SURVEY

THE SOUTHEAST QUARTER OF SECTION 34

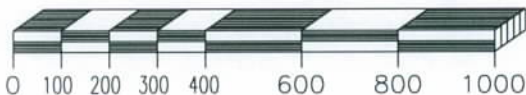
TOWNSHIP 115 NORTH, RANGE 46 WEST, YELLOW MEDICINE COUNTY, MINNESOTA



DISTANCES AND BEARINGS MAY CHANGE



SCALE: 1" = 400'



## LEGEND

- = FOUND CORNER MONUMENT
- = SET 1/2" REBAR WITH CAP STAMPED "RLS 19092"